



KChIP1 Polyclonal Antibody

Catalog No	YP-Ab-03942
Isotype	IgG
Reactivity	Human;Mouse;Rat
Applications	IHC;IF;ELISA
Gene Name	KCNIP1
Protein Name	Kv channel-interacting protein 1
Immunogen	The antiserum was produced against synthesized peptide derived from human KCIP1. AA range:1-50
Specificity	KChIP1 Polyclonal Antibody detects endogenous levels of KChIP1 protein.
Formulation	Liquid in PBS containing 50% glycerol, 0.5% BSA and 0.02% sodium azide.
Source	Polyclonal, Rabbit,IgG
Purification	The antibody was affinity-purified from rabbit antiserum by affinity-chromatography using epitope-specific immunogen.
Dilution	Immunohistochemistry: 1/100 - 1/300. Immunofluorescence: 1/200 - 1/1000. ELISA: 1/20000. Not yet tested in other applications.
Concentration	1 mg/ml
Purity	≥90%
Storage Stability	-20°C/1 year
Synonyms	KCNIP1; KCHIP1; VABP; Kv channel-interacting protein 1; KChIP1; A-type potassium channel modulatory protein 1; Potassium channel-interacting protein 1; Vesicle APC-binding protein
Observed Band	
Cell Pathway	Cell membrane ; Peripheral membrane protein . Cytoplasm . Cell projection, dendrite .
Tissue Specificity	Isoform 1 and isoform 2 are expressed in brain and kidney. Isoform 1 is also expressed in liver, pancreas, skeletal muscle, small intestine and testis. Isoform 2 is also expressed in lung, pancreas, leukocytes, prostate and thymus.
Function	function:Regulatory subunit of Kv4/D (Shal)-type voltage-gated rapidly inactivating A-type potassium channels. Probably modulates channels density, inactivation kinetics and rate of recovery from inactivation in a calcium-dependent and isoform-specific manner. In vitro, modulates KCND1/Kv4.1 and KCND2/Kv4.2 currents. Seems to be involved in KCND2 trafficking to the cell surface.,similarity:Belongs to the recoverin family.,similarity:Contains 4 EF-hand domains.,subunit:Component of heteromultimeric potassium channels. Interacts with KCND3 and the N-terminal domain of KCND2. Probably part of a complex consisting of KCNIP1, KCNIP2 isoform 3 and KCND2. Can self-associate to form homodimers and homotetramers. Interacts with KCNIP2 isoform 3 in a calcium-dependent manner. Interacts with Naja atra venom CTX3.,tissue



specificity:Isoform 1 and isoform 2 are expressed in brain and kidney. Isoform

Background

This gene encodes a member of the family of cytosolic voltage-gated potassium (Kv) channel-interacting proteins (KCNIPs), which belong to the neuronal calcium sensor (NCS) family of the calcium binding EF-hand proteins. They associate with Kv4 alpha subunits to form native Kv4 channel complexes. The encoded protein may regulate rapidly inactivating (A-type) currents, and hence neuronal membrane excitability, in response to changes in the concentration of intracellular calcium. Alternative splicing results in multiple transcript variants encoding different isoforms. [provided by RefSeq, May 2013],

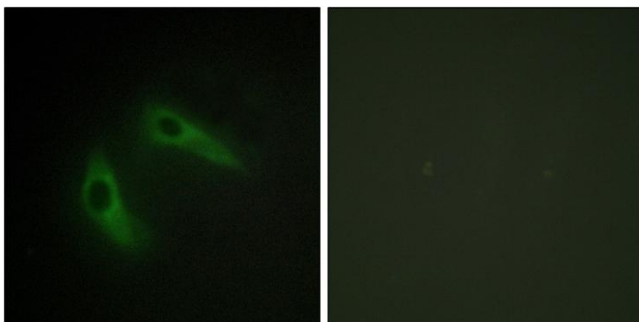
matters needing attention

Avoid repeated freezing and thawing!

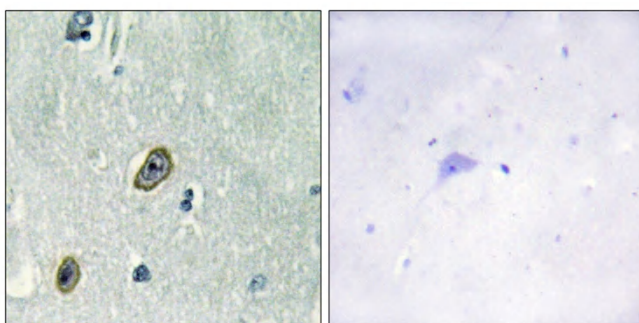
Usage suggestions

This product can be used in immunological reaction related experiments. For more information, please consult technical personnel.

Products Images



Immunofluorescence analysis of HeLa cells, using KCIP1 Antibody. The picture on the right is blocked with the synthesized peptide.



Immunohistochemistry analysis of paraffin-embedded human brain tissue, using KCIP1 Antibody. The picture on the right is blocked with the synthesized peptide.